



GAT MONTHLY MEMBERSHIP PROGRESS REPORT

Results as of: 4/30/2022

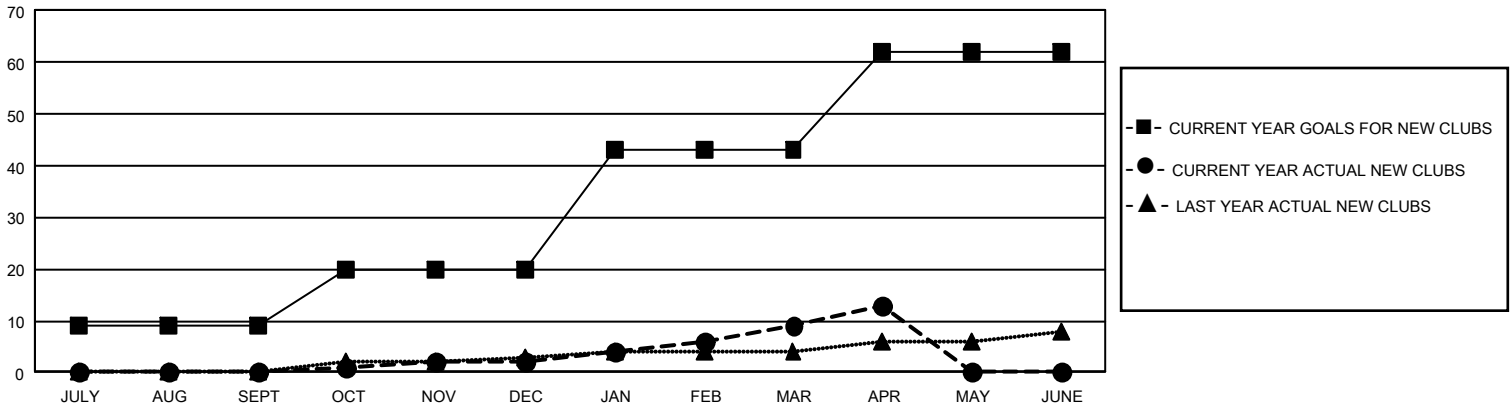
GAT Constitutional Area 5 - Japan

REPORT DOES NOT INCLUDE CLUBS IN UNDISTRICTED AREAS.

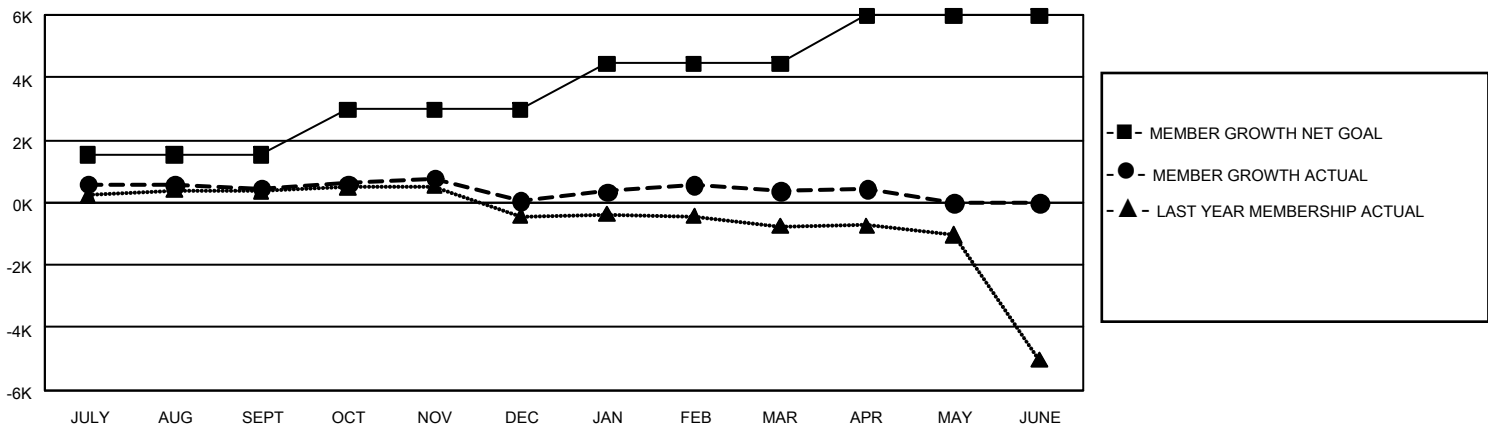
Clubs			
RESULTS FOR 2021-2022			
QUARTER	NEW CLUB GOAL	NEW CLUBS	DROPPED CLUBS
JULY/AUG/SEPT	27	0	5
OCT/NOV/DEC	33	2	10
JAN/FEB/MAR	69	7	4
APR/MAY/JUNE	57	4	2

Members			
RESULTS FOR 2021-2022			
QUARTER	MEMBER GROWTH NET GOAL	MEMBER GROWTH ACTUAL	DROPPED MEMBERS ACTUAL (including transfers)
JULY/AUG/SEPT	1540	1,942	1,350
OCT/NOV/DEC	1435	1,429	1,776
JAN/FEB/MAR	1461	1,637	1,293
APR/MAY/JUNE	1540	656	553

GOALS AND ACTUAL NEW CLUBS CUMULATIVE



GOALS AND ACTUAL MEMBERS CUMULATIVE



DROPPED CLUBS: 21	1,743 CLUBS OF 2,863 ADDED 1 OR MORE NEW MEMBERS	GENDER DISTRIBUTION	
		MALE 77,944 (76.43%)	FEMALE 24,037 (23.57%)
DROPPED MEMBERS		NON BINARY 0 (0.00%)	PREFER NOT TO ANSWER 5 (0.00%)
DECEASED 717	CLICK HERE FOR CUMULATIVE MEMBERSHIP DATA	TOTAL FAMILY UNIT MEMBERS 35,362	
CLUB CANCELLED 45		FAMILY MEMBERS PAYING HALF DUES 19,566	
OTHER 4,211			
TOTAL 4,973			